

INTO THE SWING

Morgante Wilson Architects crafts an inviting Glencoe abode inspired by nearby Skokie Country Club.

BY LAUREN BROCATO // PHOTOGRAPHED BY MIKE SCHWARTZ

THE PROJECT

Gorgeous, expansive views of Skokie Country Club's golf course in the backyard, as well as close proximity to the clubhouse, initially attracted the homeowners to this Glencoe home. The active retirees wanted to be able to enjoy the peaceful outdoor activity and tapped Evanston-based Morgante Wilson Architects (morgantewilson.com) to craft a serene abode they could grow old in. "The aesthetic they requested was to have an elegant cottage feel or a cultured clubhouse," says MWA founding partner Fred Wilson. "I recall they sent us photos of a historic clubhouse that they see often near their Wisconsin home." With that, the vision was clear, and MWA began to work their magic.

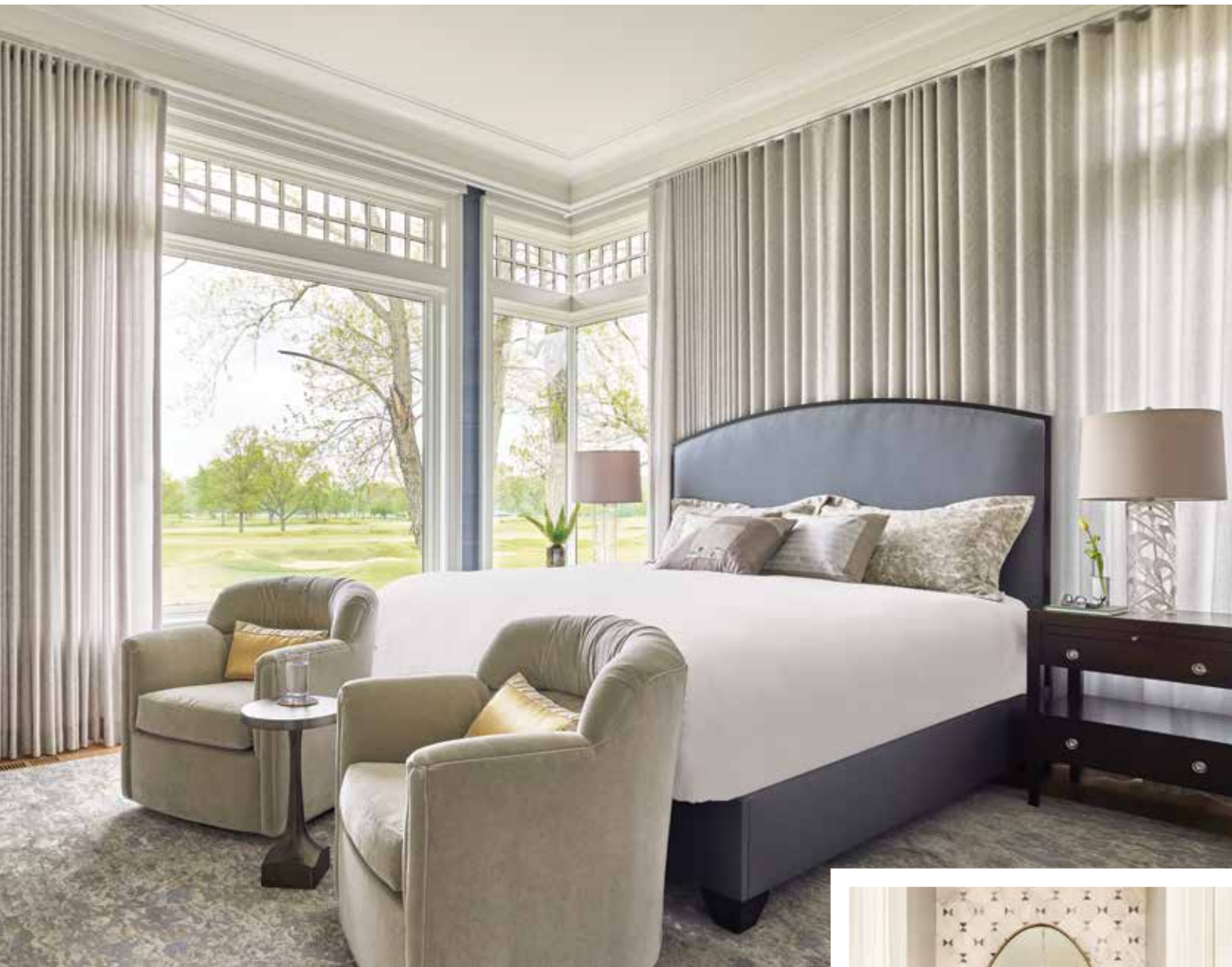


THE DESIGN

"Golfing and accessibility with a warm, homey feeling were key elements we considered when putting together fabric palettes and selecting furniture. We selected items that would last throughout the years but were also comfortable, clean and approachable. Because the home's backyard is a golf course with beautiful greenery, we focused on creams, grays and blues with warm wood tones," MWA founding partner Elissa Morgante says, adding that the clients favored a clean, transitional aesthetic punctuated by curated accent pieces and artwork. Works from Art En Object populate the space and



In the kitchen, Malplaquet pendants from The Urban Electric Co. hang above Hickory Chair Newbury swivel counter stools in Concertex fabric. Opposite page, from top: A custom dining table by Parish Co. pairs with Arles armchairs; the dining room bar features an alluring Iceberg onyx backsplash and hardware from MYOH.



complement statement pieces like a custom blue-hued bench by Park West Furniture in the entry and a sleek custom dining table by Parish Co.

THE PROCESS

The clients didn't want a home large in scale, but rather they wanted the abode to appear as if it was just one floor, complete with an attic-level lookout space, a home office and a widow's walk. "One unique element of the home is the all-glass elevator with a custom inlay floor, not only in the elevator cab itself, but also in the floor of the elevator shaft," Morgante says. "We referenced the location of the home on the golf course and created a custom

From top: A pair of inviting Hancock & Moore Gordon swivel glider chairs in Holly Hunt's Cloud Nine Grey Mist fabric sit in front of a custom-upholstered king bed with Holland & Sherry's Heilo Coal wool fabric; Uttermost's Petra oval mirror.



"THE AESTHETIC THEY REQUESTED WAS TO HAVE AN ELEGANT COTTAGE FEEL OR A CULTURED CLUBHOUSE."

—FRED WILSON

tone-on-tone wood inlay of the course hole and the location of the home. The custom inlay mosaic tile in the elevator shaft is also a reference to the home's surroundings."

THE OUTCOME

Despite architectural challenges, such as working around the vinyl weather barrier units for the rear porch and roll-down screens, the home emerged a beautiful oasis of luxury fit for leisurely days ahead thanks to the talented team at MWA. "[They are] amazing clients who we looked forward to all of our meetings with," Wilson concludes. "[It was a] fantastic project on all fronts." ◊

From top: Hammerton's Contemporary chandelier and Cast Classic Club X dining arm chairs in Pindler Bentley denim fabric; a Savory House Woodstock hanging lantern above the entry adds to the home's curb appeal.

