

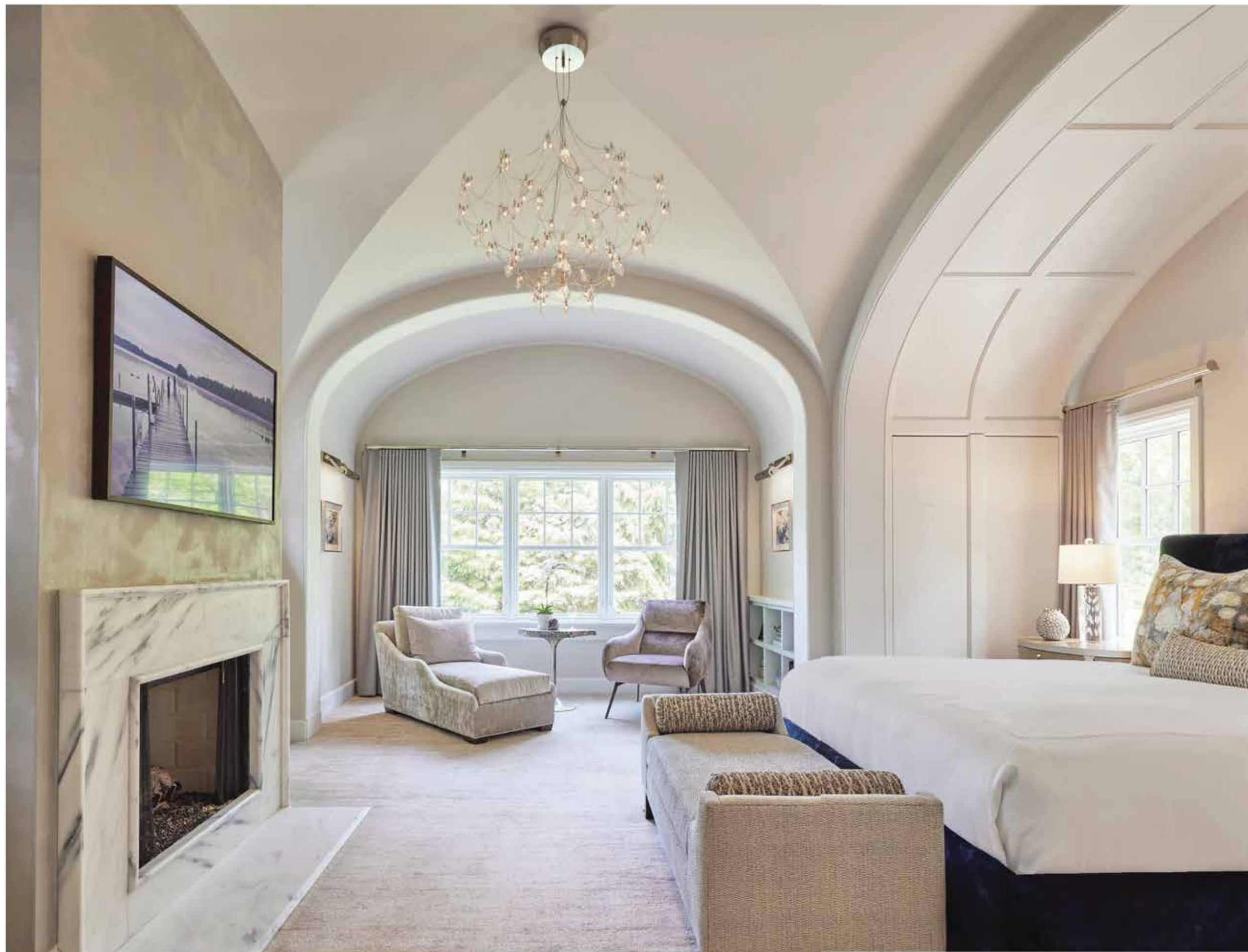
# Making Changes

HAVING JUST DECAMPED FROM DOWNTOWN TO WINNETKA, A COUPLE TRANSFORMS A RED-BRICK COLONIAL INTO THE HOME OF THEIR DREAMS WITH THE HELP OF MORGANTE WILSON ARCHITECTS.

BY J.P. ANDERSON / PHOTOGRAPHED BY MIKE SCHWARTZ



The living room beckons with a custom sofa covered in tailored Broche marine wool and adjoining Mix chair by Nathan Anthony in Newell's Connecticut.



From left: In the primary bedroom, a groin vault ceiling, soaring arches with panel molding and a chic marble fireplace make for one of the finished home's most stunning spaces; the powder room pops with Arte's bold Flamant Les Mémoires L'Histoire wallcovering.



#### THE CLIENT

While searching for a new home in Winnetka, a couple found two options with great potential, right next door to each other. How to decide between the two, both of which required renovation? Ask an expert, advised the pair's realtor, who referred them to Morgante Wilson Architects, with whom she'd worked in the past. After MWA partner John Potter toured both homes with the clients and walked them through pros, cons and general budgeting, they came to a decision—and also hired MWA to plan and design the home's interior renovations and also provide interior design services for the newly updated spaces.

#### THE PRIORITY

Replacing the home's interior three-story stair with a new stairwell that would allow for increased head height was key to accommodate the taller husband, notes Potter. "Building on that, the couple also wanted to open up the existing breakfast room to the family room, which involved coming up with



From left: In the family room, a multifunctional nook ideal for homework or lounging features a custom 14-foot curved banquette with back covered in Romo's Lombardo Zinnia multicolor velvet and seat covered in easy-clean vinyl from Opuzen; the primary bathroom's Sawyer tub in hammered nickel by Americh makes bathing that much more indulgent; the mudroom stands out with custom cabinetry painted Benjamin Moore Anchor Gray, Terra Geometria matte tile by Virginia Tile and Circa Lighting's Morris lantern.

existing vaulted ceiling in the primary bedroom—which was part of an earlier renovation—was tamed down with gentle curves that made the space more cozy and intimate, plus new trim and rearranged exterior windows.” Design-wise, the feel is transitional and family friendly, while still fairly classic, with visual interest added by the incorporation of several interesting pieces of art from the couple’s collection, as well as a custom 3D art installation above the living room fireplaces using glass “petals” that were made for the couple by glassblower friend Hiram Toraason as favors for their wedding.

#### THE DETAIL

“The vaulted ceiling treatment and arches in the primary bedroom stand out,” Potter notes proudly. “We took an ill-proportioned and undefined vaulted bedroom and created an oasis that is not only well-scaled but intimate and cozy, even with the additional volume.”

#### THE OUTCOME

From the newly opened and flowing first-floor rooms to the formal yet inviting living room, the ideal-for-entertaining dining room and the “haven” that is now the owner’s suite, the clients couldn’t be happier with the finished product. Simply put, sums up Potter, “The homeowners love how the project turned out and love living their life in their house.” ■

a solution for a fireplace that separated the two rooms, plus rework the existing primary suite, update the hall bath and add a laundry center on the second floor.” As for the interior design aesthetic, notes partner and principal of interior design K. Tyler, “the homeowners were very open-minded and wanted the style to fit with the historic bones and traditional character of the house, while still being updated and comfortable. Additionally, with two young children, they wanted to be able to use and live in every room of the house.”

#### THE STRATEGY

The MWA team solved the fireplace conundrum with a see-through fireplace that was able to vent through the floor, allowing them to remove the chimney and flue that closed off the breakfast room from the family room. “On the second floor,” says Potter, “renovating the stairs and bathrooms meant that the bedrooms could be organized better and the



## DESIGN DETAILS

#### TYPE

Single-family home

#### LOCATION

Winnetka

#### ARCHITECTURE/DESIGN/INTERIORS

Morgante Wilson Architects  
morgantewilson.com

#### BUILDERS/PAINTERS/MILLWORK/PLASTERWORK

Martin Niedzwiecki  
martin@dom79.com

#### ADDITIONAL MILLWORK

Neumann Custom Woodworking  
neumanncustomwoodworking.com

#### ADDITIONAL PLASTERWORK

Studio BK  
studiobkinc.com

## RESOURCES

#### Americh

Tub in primary bathroom  
americh.com

#### Anne Loucks Gallery

Artwork by Grace Munakata  
loucksgallery.com

#### Arte

Powder room wallpaper  
arte-international.com

#### Bernhardt

Living room chairs  
bernhardt.com

#### Casa Spazio

Primary bedroom chair  
casaspazio.com

#### Danby Marble

Primary bedroom fireplace stone  
stonecutters.com

#### Global Views

Dining room chairs  
globalviews.com

#### Happy Floors

Primary bathroom floor tile  
happy-floors.com

#### Hudson Valley Lighting

Powder room sconces  
hudsonvalleylighting.com

#### Kallista

Primary bathroom tub filler  
kallista.com

#### Mirror-tique

Powder room mirror  
mirror-tique.com

#### Oly

Family room chandelier  
olystudio.com

#### Oscar Isberian Rugs

Various rugs  
isberian.com

#### Pure Edge Lighting

Primary bedroom chandelier  
pureedgelighting.com

#### RH

Dining room table  
rh.com

#### Romo Villa Nova

Dining room wallpaper/window coverings  
villanova.co.uk

#### Vaughan

Dining room chandelier  
vaughandesigns.com

