

BEAUTIFUL KITCHENS™

Take
Comfort in
Quality

33 WAYS
TO CUSTOMIZE
YOUR CABINETS

Plans
for Every
Kitchen
Included

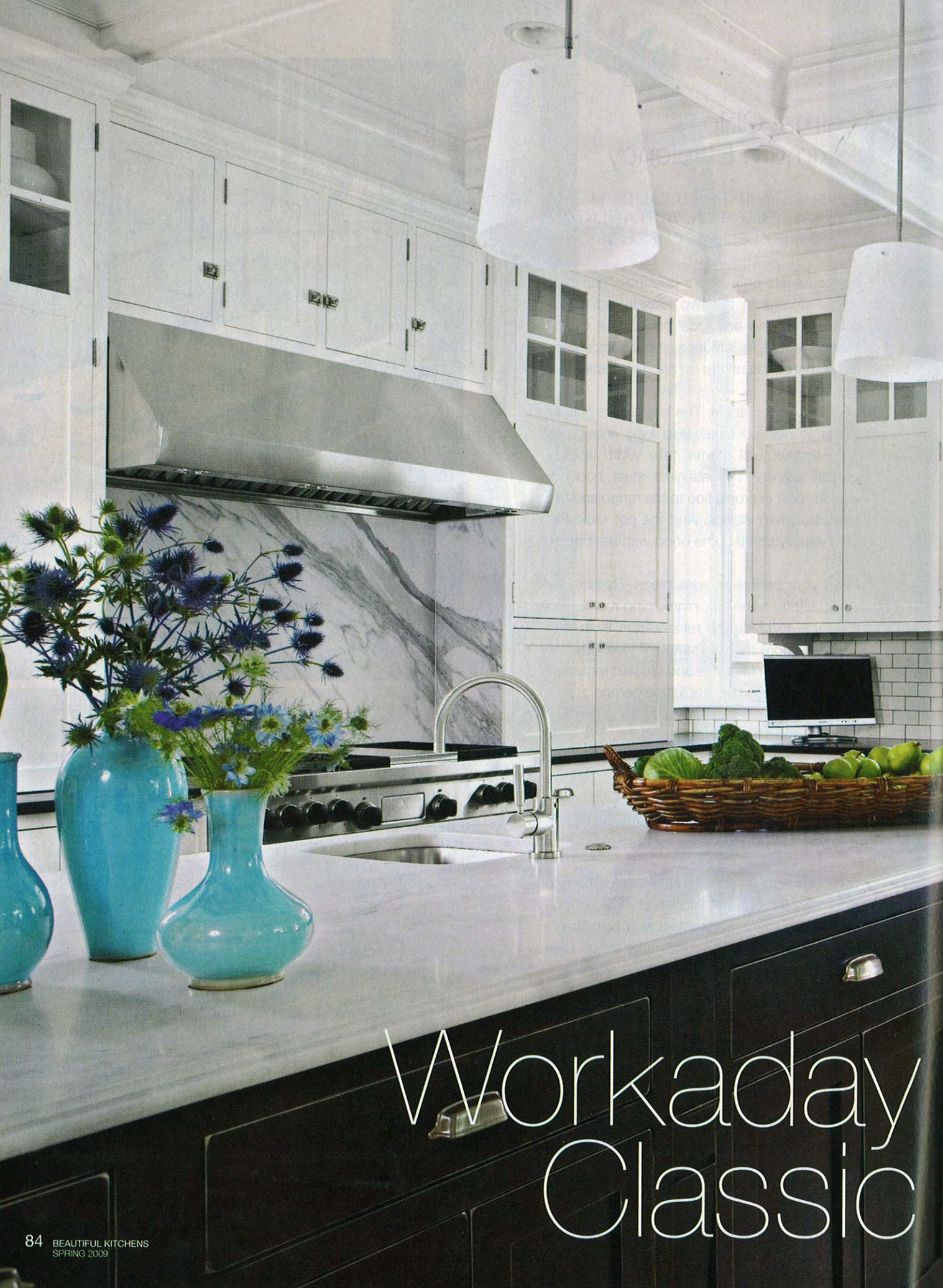
SPRING 2009

Display until April 28
\$7.99 U.S.

KitchenBathIdeas.com



Work Magic with Marble:
Designers Show You How
Prettiest Sinks We've Seen



Workaday Classic

Coffered ceilings and inset paneled cabinets give the new kitchen vintage character, while adhering to a modern, clean-lined aesthetic. Basic subway tile, white shade pendants, and stone floors offer minimal distraction, allowing millwork details to shine.



Milled details refine a kitchen built as an all-purpose hangout for a busy family of five.



This Photo: This nonstructural column balances a supporting column at the breakfast counter's opposite end for pleasing symmetry and added function. Building the microwave and coffeemaker into its base capitalizes on space to reduce countertop clutter.

Opposite Top: The beautiful veining of marble slabs cladding the range niche are carefully book-matched.

Opposite Bottom: Tapered furniture legs and a long apron with drawers distinguish this counter, which separates the work areas from the dining room.

Entertaining and everyday spaces, there's no distinction made in Kristie and Mike Edwards' new suburban Chicago home. Unlike conventional plans, the couple insisted on a series of hangout spaces—elegant for company and cozy for family. The kitchen embodies their vision, inviting gatherings of every type thanks to its savvy layout and the comfort that comes from mixing traditional architectural forms.

Basic Mission-style cabinets meld with Georgian-style columns and the deep moldings of a boldly scaled coffered ceiling. The result is distinctly personal and ever stylish. "I had been searching through magazines and showed my two favorite kitchens to our design team. They helped me combine the best features from each," Kristie says.

That design team is composed of architects Fred Wilson, Chris LaCerde, and Robert Zuber from Morgante Wilson Architects and interior designer Nancy Bernstein. "Kristie was very involved in the design," LaCerde says. "She made it clear to us that she loves clean lines but also a traditional look."

"I have never been comfortable with clutter or felt the need to have lots of things on display," Kristie says. "I prefer



The breakfast counter transitions to a convenient serving area during meals taken at the long plank table. Mission-style doors at the far left conceal a computer workstation, while closed doors on the right conceal a pantry for extra dry storage.





using texture to warm a space. And I love white; it makes a house feel bright and cheerful even on dark winter days."

White cabinets combine with white walls and white woodwork to give the room a crisp, clean feeling. Durability is also key. "We have three young boys," Kristie says. "The white cabinets wipe clean in seconds."

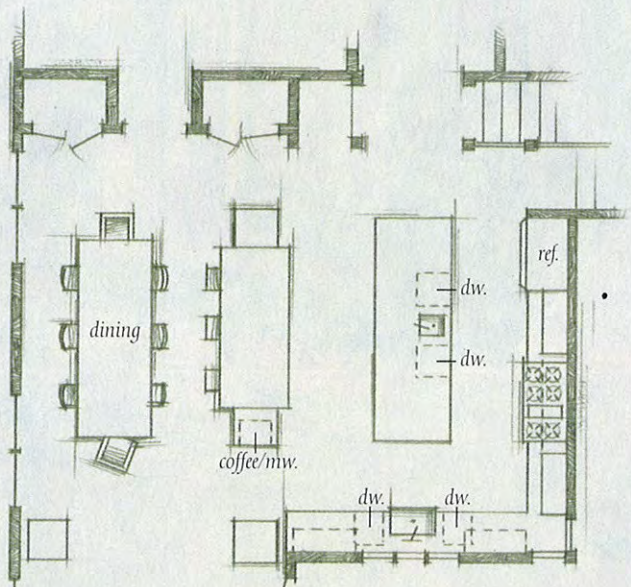
The same holds true for the honed white marble on the island, chosen for its crisp contrast with absolute black granite tops on the perimeter counters. "Friends warned against using white marble on the island, but our fabricator told us we wouldn't have problems, and we haven't," Kristie says. "We seal the stone once a year for easy upkeep. My kids come to the island armed with pens and markers, and everything just wipes clean."

Travertine floors in a tumbled finish offer traction to wet shoes and muddy paws (the Edwards family has two dogs). Kristie loves how the tiles are set in a pattern of different size squares. "Variation makes every surface interesting," she says.

Given the mix of styles and textures, visual symmetry proved useful to promote a feeling of ease. "One of the columns flanking the buffet was structural, so we added the second one with the microwave for balance," LaCerde says. The columns are also the same diameter and shape as those on the home's exterior. "The room has a wide open feel, so the pillars help ground the space," LaCerde continues.

Furniture elements, including tapered legs on the range wall cabinets and peninsula, add dimension within the sea of white. Other details include divided-light glass cabinet doors, which the designers sized to echo the room's windowpanes.

A change in flooring from stone to dark-stained oak marks the work core from the serving buffet and dining area. "We never entertain formally, so we chose not to have a formal dining room," Kristie says. "We have people over all the time. With a great dining table just off of the kitchen, the layout always offers room for one more."



DESIGNER PICKS

Cabinetry: custom by Lambright Woodworking; 260/593-2997

Windows: Marvin Windows & Doors; 888/537-7828; marvin.com

Range and vent hood: Wolf Appliance Co.; 800/332-9513; subzerowolfkitchens.com

Stone flooring and backsplash tile: Materials Marketing; 800/368-3901; mstoneandtile.com

ADDITIONAL RESOURCES
BEGIN ON PAGE 116